

# Phased Reopening Plan

## Info Manual

**JULY  
2021**



Bethel returns to church:

# BETHEL Built For This

Returning with Soft Launch  
at the end of August

- RSVP registration required for limiting seating
- Masks will be worn while in worship
- Spaced Seating / Covid spacing for non-family members

**JOIN US**

[www.bethel.org](http://www.bethel.org)

1300 DRUID HILL AVENUE  
BALTIMORE, MD 21217

Telephone: (410) 523-4273 ext. 0  
Email: [info@Bethel.org](mailto:info@Bethel.org)

**Rev. Patrick D. Clayborn, Ph.D.**  
*SENIOR PASTOR*

**SIS BARBARA KNOX**  
Steward Pro Tem

**SIS JANETTE R. SMITH**  
Dir of Church Growth

**SIS KAMALA GREEN**  
Steward







# Bethel AME Church

---

Rev. Patrick Clayborn, PhD, Senior Pastor

## **BETHEL CHURCH COVID-19 GUIDELINES SUMMARY**

**The following guidelines have been implemented to support your safety during the reopening of Bethel AME Church after the Coronavirus COVID 19 shutdown. The guidelines follow the AME Church, Centers for Disease Control (CDC). State of Maryland and Baltimore City governments policies and procedures for reopening churches and houses of worship.**

- Online services will continue to be streamed live on Sunday as well as Bible Study on Wednesday.
  - During the initial reopening phase, there will be one service (9:45) on Sunday.
  - All people who enter are required to wear masks or face coverings.
  - All who enter will have their temperature taken before entering the church and its other buildings. (No touch thermometers will be used).
  - If the visitor or member refuses to wear a mask or face coverings, complete the health survey, sign the waiver form, and have their temperature taken; they will be refused entrance.
  - Bethel will provide masks to those who do not have their own.
  - Ushers, Ministry of Helps and Security will be posted at the center Narthex door and wheelchair ramp door to check temperatures and make sure people are wearing masks or face coverings and complete required forms before entering the church.
  - The Lanvale Street side entrance door nearest the men's restroom will not be used for entering the church.
  - Six feet social distancing is required in the church and its buildings, on the parking lot and on the sidewalks surrounding the church.

- Floor markings are in the sanctuary, elevator, and other areas to assist with social distancing. Reminder signs are posted throughout.
- Seating will be assigned based upon zones to insure six feet social distancing in the sanctuary and for contact tracing, if needed.
  - Blue tape on pews and chairs indicates where people should sit.
  - Members of the same family/household can sit together.
- All who are not fully vaccinated are encouraged to worship online.
- Hugs, handshakes, or touching during the worship service and whenever people are in the church and its buildings is not allowed.
- Volunteers and staff health risks and vaccination status will be considered before they are able to work.
- Hand sanitizer is clearly labeled and available throughout the church. Primarily in the wall dispensers.
- Restrooms will be open:
  - Access will be limited to two - three people at a time to maintain social distancing. COVID 19 hand-washing guidelines are posted.
  - Volunteers are at the door during worship service to monitor access.
- Brooks Chapel is used as a passageway when entering or leaving the sanctuary. The nurses' station is open and located in Brooks Chapel.
- Ministry and other small group meetings will not be held in-person during phase one of the reopening. They will continue to be virtual.
- Sunday morning breakfast, meals, snacks, and coffee will not be served to maximize member safety and social distancing.
  - The kitchen and Coker Hall will be closed for all food service and eating together and gatherings of any type.
  - Water fountains are unplugged. Bottled water is available.
  - Community Food giveaways will be conducted outside.
- Sunday School and IThrive-Children's Church will remain virtual during the initial phase of the reopening.
- Bibles, hymnals, fans, pens, information cards, etc., have been removed. Fanning is not allowed to decrease aerosol spread.
- Members are encouraged to have their own personal tissue packs.
- Offering envelopes will be placed on pews where the seat is marked.
- Members should NOT seal envelopes by licking them.
- Offering envelopes will be dropped in baskets when leaving after worship service.



- Prepackaged communion elements will be distributed upon entry on first Sundays and should be properly discarded in trash cans when leaving at the end of worship service.
- Only staff and specified officers will have access to the third floor. Access will be monitored by security at the elevator and stairwells.
  - All others will be granted access by appointment only and escorted to the third floor.
  - Prayer in the third-floor hallway prior to Sunday service will no longer occur due to social distancing constraints.

## **WORSHIP SERVICE PROTOCOLS**

- Hugs, handshakes, touching during the worship service and whenever people are in the church and its buildings is not allowed.
  - Greeting each other should be done in a no-contact ways.
  - Signs are posted on entrance doors to the sanctuary and throughout reminding you to not shake hands and to use non-contact greetings. Reminders are shown on the screen.
- “411 bulletins”, flyers, and envelopes will no longer be handed out.
  - Announcements will be projected on the screens.
- Length of each service will be shortened to help with safety, cleaning and allow time for people to enter and leave.
- Altar prayer will be discontinued to maintain social distancing.
- Converts and new members who respond to the call to give their lives to Christ or to join Bethel should come down to the altar and stand on the floor marking to practice social distancing. They will be escorted to Brooks Chapel.
- Congregational singing will not be practiced preventing aerosol spread.
- The nurses’ office will always be staffed during worship services and nurses should be notified when members/visitors show signs of illness.
  - These people will be escorted to the nurses’ office for assessment.
- Dismissal will be orderly and directed from the pulpit, to ensure social distancing. Signage on the floor assists with social distancing. Following are the exits for each aisle.
  - Lanvale side aisle exits towards Lanvale Street entrance.
  - Music side aisle through Brooks Chapel to Lanvale Street entrance.
  - Center aisles exit towards the Narthex – Druid Hill Avenue entrance.
  - Center sections leave back rows first.
  - Side aisles leave front rows first.
  - Center Balcony use steps nearest the Media Booth

- Right Side Balcony use steps near the lady's room
  - Left Side Balcony (pipe organ side) use Lanvale stairway and exit using the wheelchair Lanvale Street side entrance.
- Narthex Lobby will primarily be used for entering and exiting the church and to access to the handicap restroom.
  - There will be no gathering and sitting on the pews in the Narthex Lobby.
  - Seating will only be available for people who are waiting for MTA or private pick up.
  - Social distancing will be required on the sidewalks surrounding the church and the parking lot. There should be no gathering outside around the entrances.

Note: There are specific reopening guidelines for each department, ministry, locations, and rooms in the church. These guidelines will be communicated and made available to the appropriate leaders, staff, and ministry members.





“  
...be  
transformed  
by the  
renewing of  
your minds...

”

ROMANS 12:2

# STOP!

Go home if you have any of these symptoms



Fever



Difficulty  
breathing



Loss of  
taste or smell



Muscle  
pain



Nausea, diarrhea,  
or vomiting



Chills



Cough



Runny nose  
or congestion



Sore throat



Headache



Fatigue

## PROTECT YOURSELF AND YOUR CHURCH FAMILY

2019 OVERVIEW & REPORT

EVERYONE MUST REGISTER TO ATTEND  
SERVICES



# COVID-19 REGATHERING STRATEGY

*We are committed to working together to create a safe and welcoming environment for worship at Bethel AME Church*

## OUR PLAN



*Touch-free environment*



*Staff and volunteers will wear masks.*



*Hand sanitizer will be available at each entrance.*



*Common areas will be sanitized regularly.*



*The Cafe and iThrive Church are closed. Drinking fountains are turned off.*

## YOUR PART



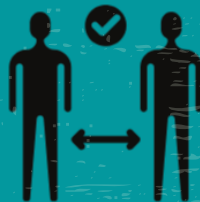
*Make reservations for your household to attend worship.*



*Stay home if you are not feeling well.*



*Wear a mask to worship.*



*Maintain 6 feet of space between you and anyone not in your household.*



*Follow directions of ushers when attending worship.*

**EVERYONE MUST REGISTER TO ATTEND SERVICES**

**OUR FOCUS - OUR COMMITMENT**

**Authentic God  
Encounters**

**Powerful  
Worship**

**Healthy  
Connections**





# Reflection 1



**ACCEPT** - Our worship experiences won't be the same.

**EXPECT** - Routines may change, but our  
ENCOUNTERS WITH GOD WILL BE POWERFUL.

Different doesn't = bad, or less than.  
We can adapt to what feels unfamiliar.

# Reflection 2



**ACCEPT** - how we fellowship with each other may feel unnatural, restrictive, and awkward .

**EXPECT** - we can connect deeply and powerfully by paying attention and staying present.

Everyone will return with a different sense of loss and comfort concerning physical connection / contact.

We can adapt to what feels unfamiliar



# Reflection 3



**ACCEPT** - What was (in processes / some traditions) are no longer options.

**EXPECT** - New routines will offer new opportunities for growth in us, and for our church.

Our ability to adapt to change  
is a decision  
that is powered by our mindset.

*Focusing on what we ARE able to do,  
opens the door to innovation in ministry,  
and a deepening of our faith.*

# Reflection 4



**ACCEPT**- Covid-19 Protocols established for Bethel are in place and will be enforced.

**EXPECT** - Dismissing protocols = a warning w/ adjustment.  
Non compliance= removal.

Changes in protocols  
are based  
in love and protection.



# Reflection 5



**ACCEPT** - How we experience God cannot be hindered by form or fashion.

**EXPECT** - God's presence will manifest in signs, wonders and miracles.

Pray and ask God  
to minister to you about your heart position  
returning to church.

What are you focusing on?  
Set your intention before you come in the door.



# Meditation



*Gratitude, Intention Setting, Alignment*

BEGIN WITH GRATITUDE

SET YOUR INTENTION

ALIGN YOUR THOUGHTS, ATTITUDES, ACTIONS



# BETHEL AMEC

*Built for This*

## AND SO ARE YOU